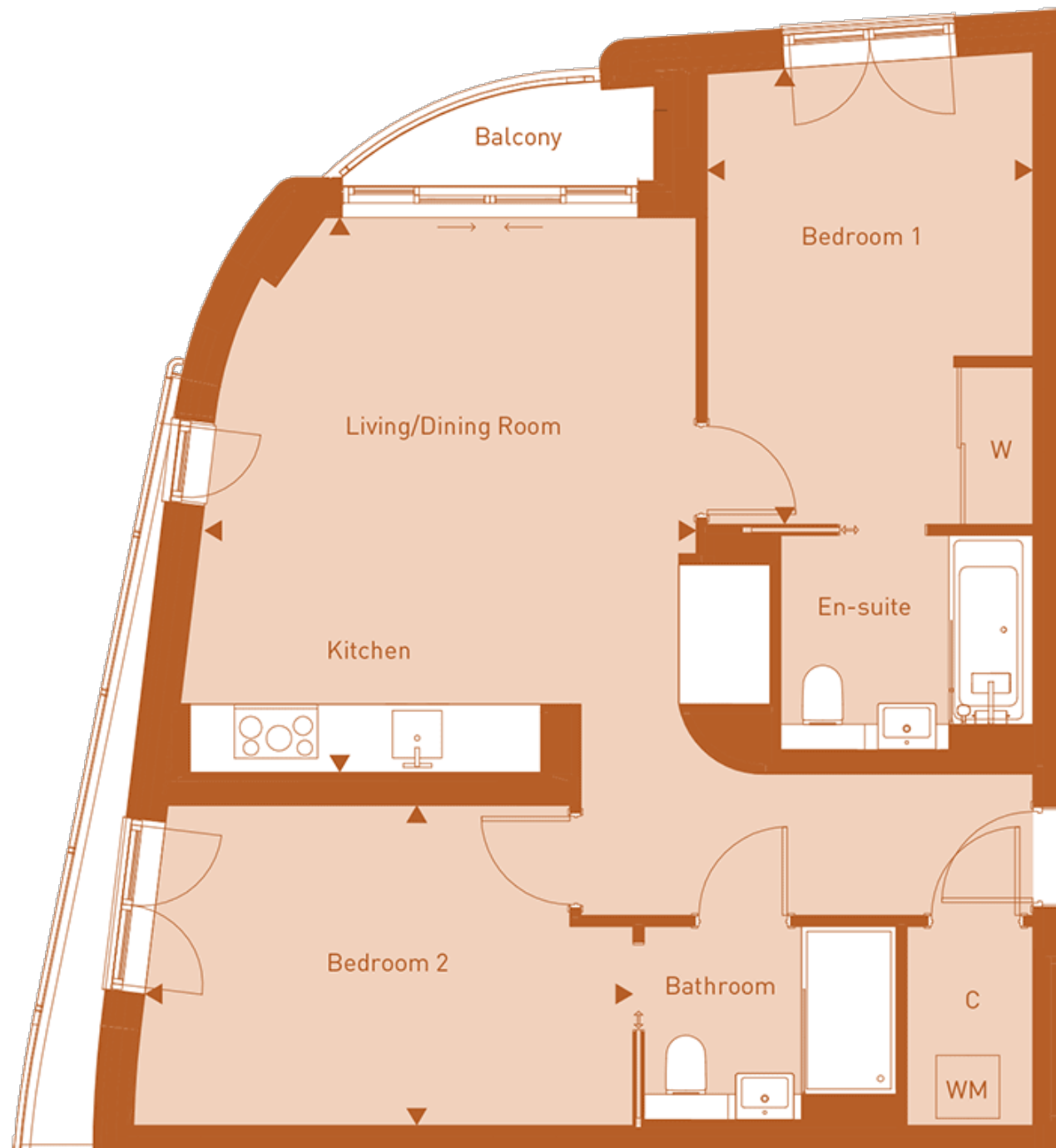


Floor plans

Sixth Floor



Living/Dining/Kitchen:

5.28m x 4.67m (17' 04" x 15' 04")

Bedroom 1:

4.34m x 3.23m (14' 03" x 10' 07")

Bedroom 2:

3.05m x 4.65m (10' 00" x 15' 03")

Key

C - Cupboard

W - Wardrobe

WM - Washing Machine