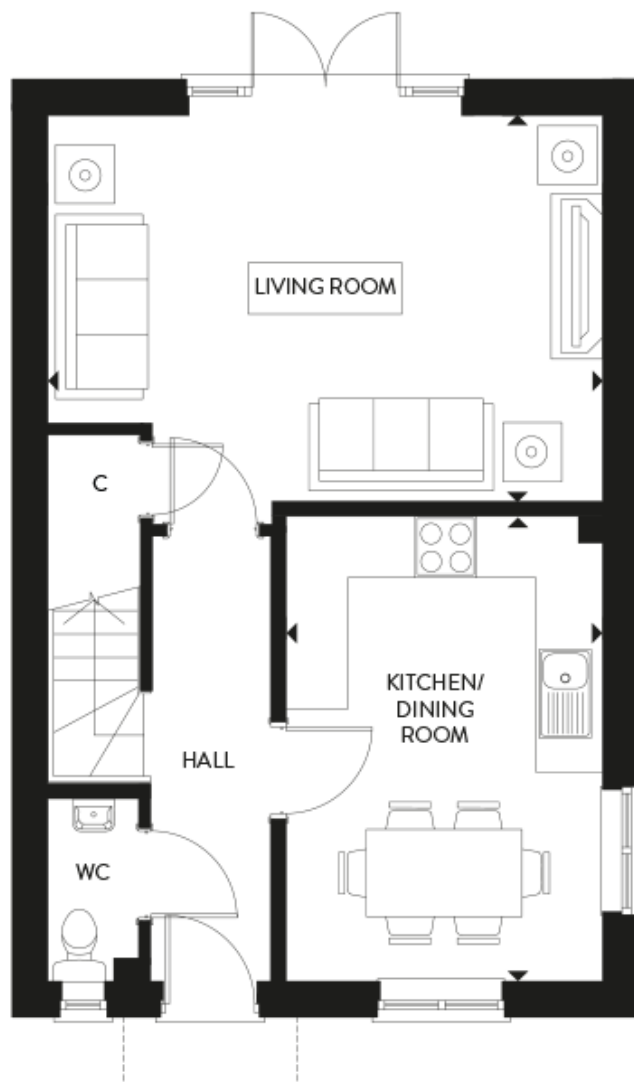


Floor plans

Ground Floor



Kitchen/Dining:

4.55m x 3.10m (14' 11" x 10' 02")

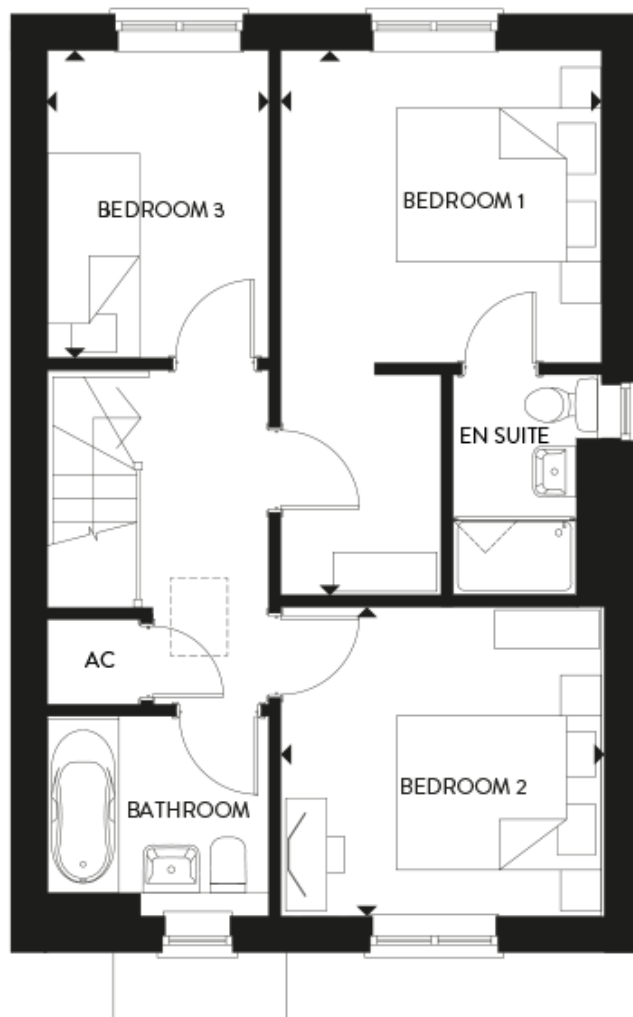
Living Room:

5.41m x 3.76m (17' 09" x 12' 04")

Key

Some plots are handed. Please speak to a sales advisor for more information.

First Floor



Bedroom 1:

3.12m x 3.05m (10' 03" x 10' 00")

Bedroom 2:

3.12m x 3.02m (10' 03" x 9' 11")

Bedroom 3:

2.100m x 2.16m (9' 10" x 7' 01")

Key

Some plots are handed. Please speak to a sales advisor for more information.