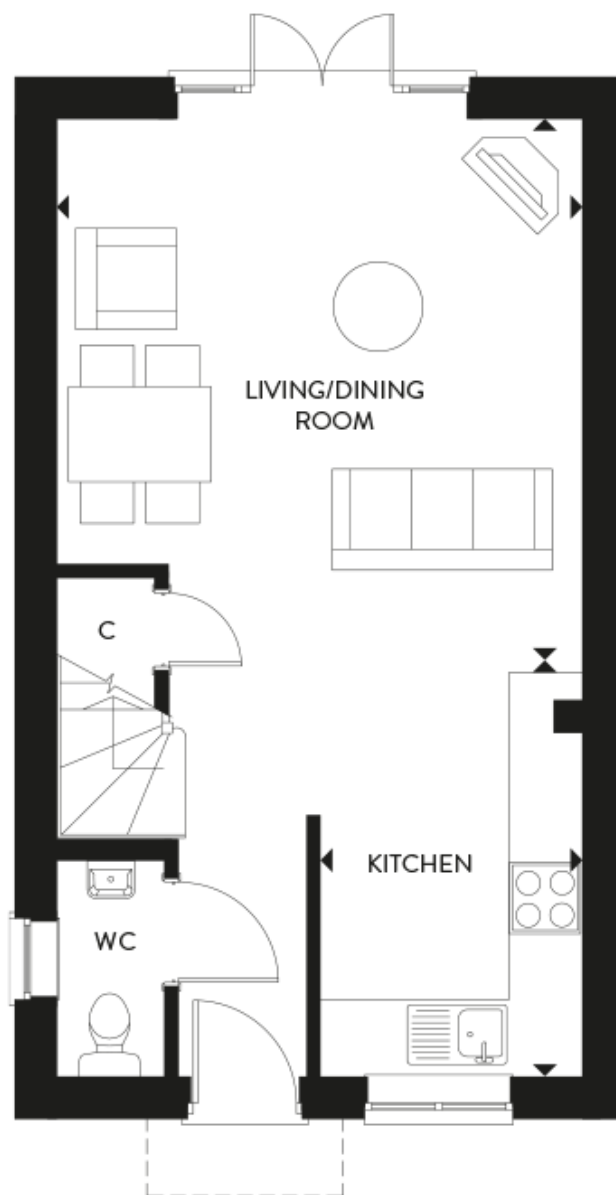


Floor plans

Ground Floor



Kitchen:

3.51m x 2.21m (11' 06" x 7' 03")

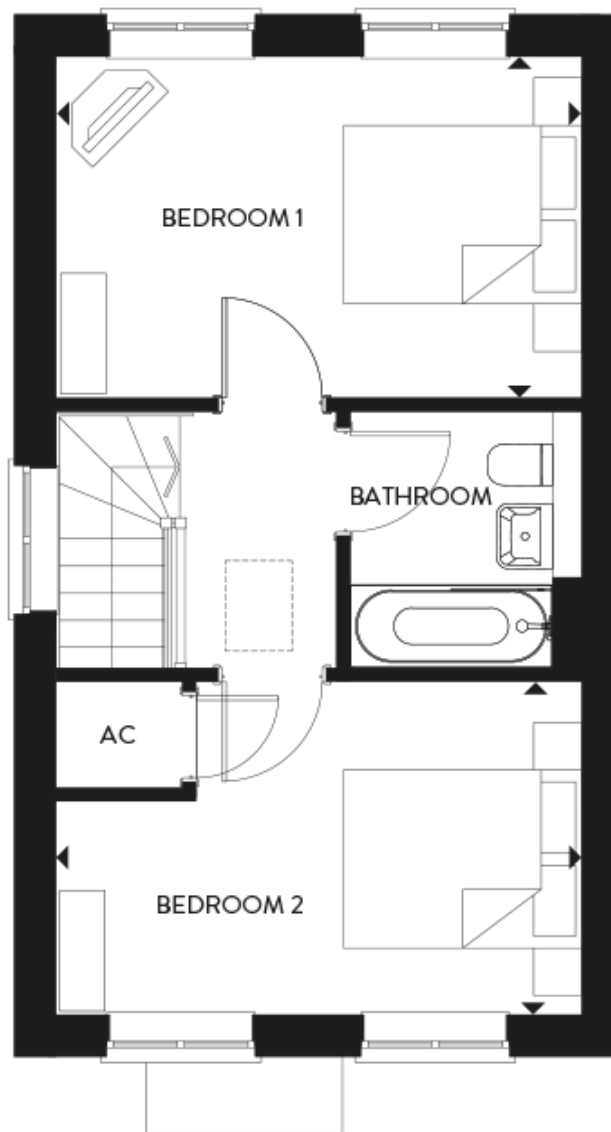
Living/Dining:

4.55m x 4.42m (14' 11" x 14' 06")

Key

Some plots are handed. Please speak to a sales advisor for more information.

First Floor



Bedroom 1:

4.42m x 2.87m (14' 06" x 9' 05")

Bedroom 2:

5.03m x 2.79m (16' 06" x 9' 02")

Key

Some plots are handed. Please speak to a sales advisor for more information.